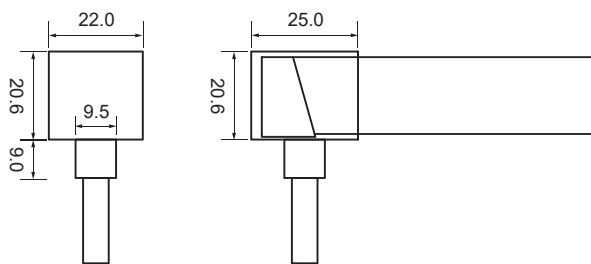


SFW20 Configuration and Accessories

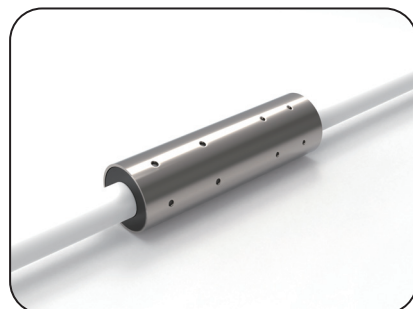
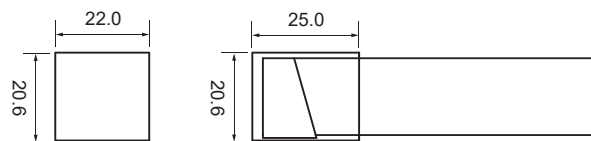
Mold Injection Connector (IP68 Factory Assembly Only)



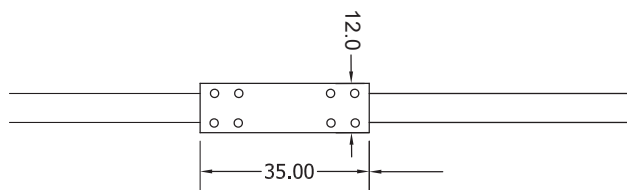
Bottom Entry Connector
 MJ-SFW20-A-B01/02/03
 MJ-SFW20-A-B01SM
 MJ-SFW20-A-B02SF
 MJ-SFW20-A-B03SFM



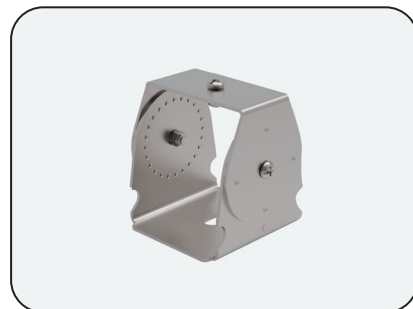
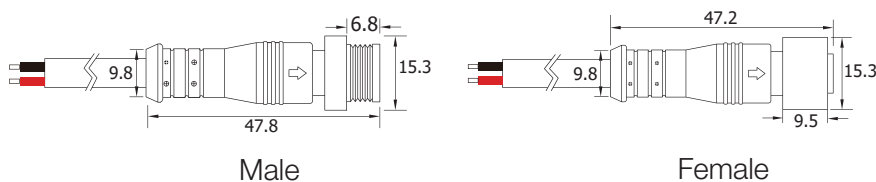
End Cap



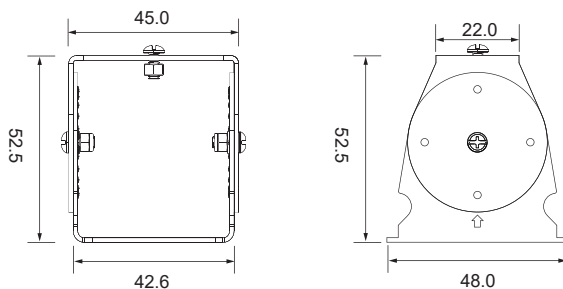
Waterproof Interrupter



Male & Female Connector
 SYZ-M12-M-2C-075-W
 SYZ-M12-F-2C-075-W

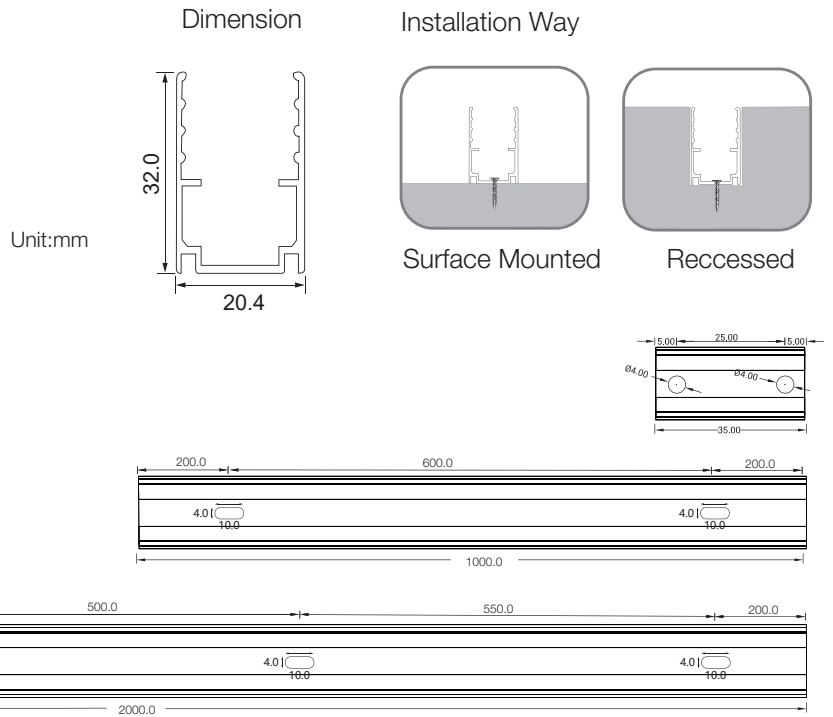


Angle Adjustable Bracket
 WJJ-CYJ-033



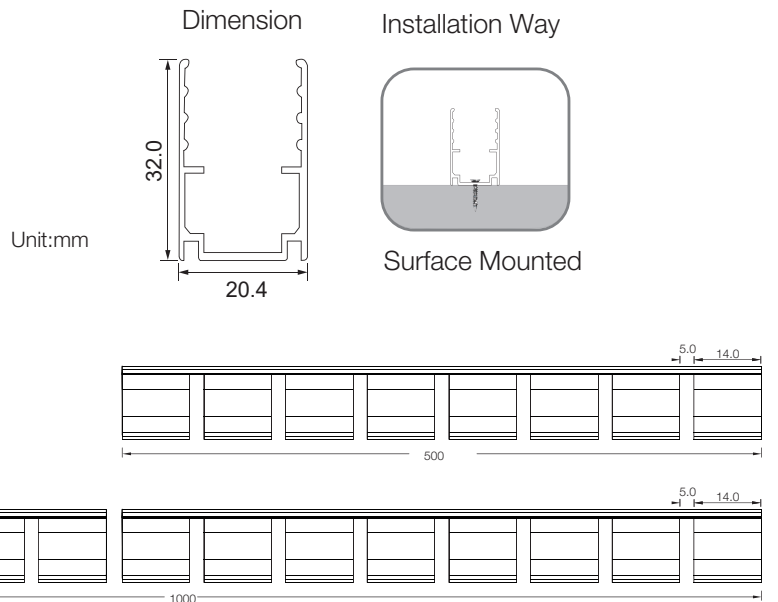
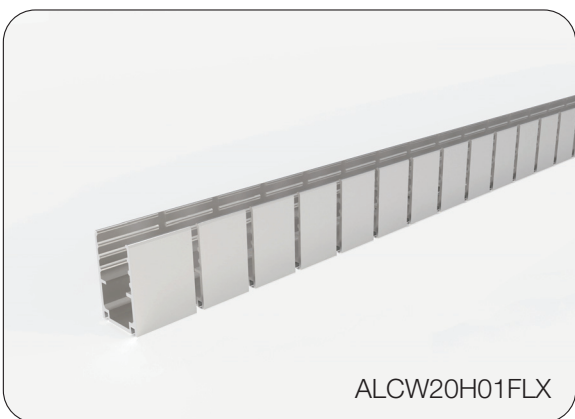
SFW20 LED Wall Grazer Mounting Channel

1. Aluminum Channel



| Model | W x H(mm) | Standard Length | Screw Holes | Holes Numbers | Suitable Product |
|-----------|-----------|-----------------|-------------|---------------|------------------|
| ALCW20H01 | 20.4*32.0 | 35mm | Φ4.0mm | 2 | SFW20 |
| | | 1000mm | 4.0x10mm | 2 | SFW20 |
| | | 2000mm | 4.0x10mm | 4 | SFW20 |

2. Flexible Aluminum Channel



| Model | W x H(mm) | Standard Length | Suitable Product |
|--------------|-----------|-----------------|------------------|
| ALCW20H01FLX | 20.4*32.0 | 1000mm | SFW20 |
| | | 2000mm | SFW20 |