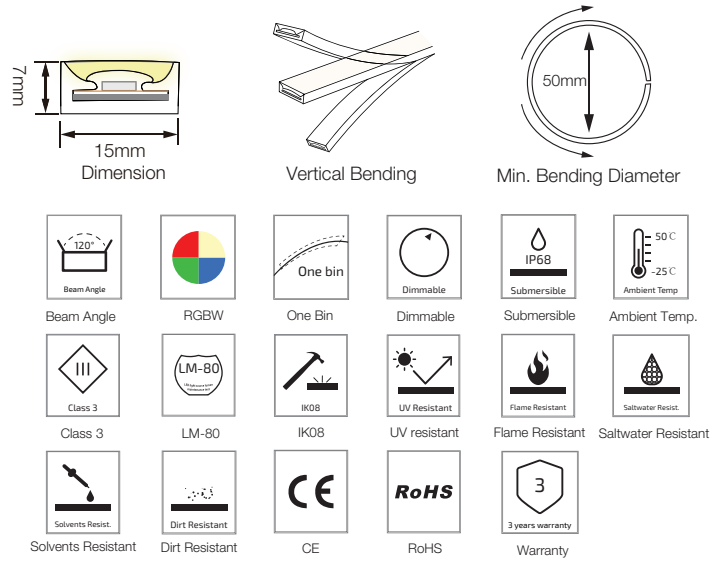


P01 Multi Color RGBW LED Strip Light





P01-24V-5050-60-RGBW

Specification

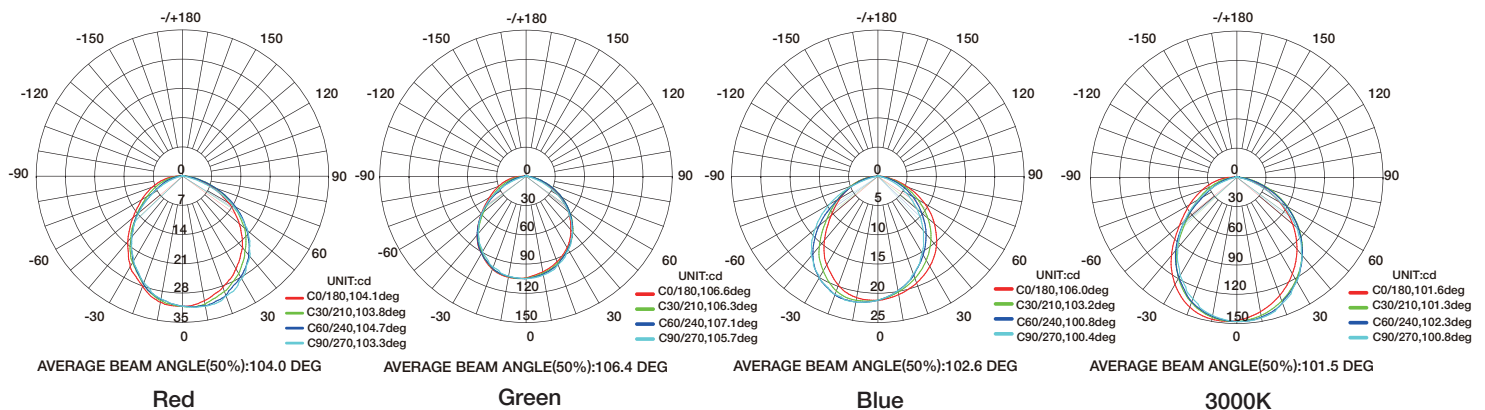


Technical Parameters

Electrical	
Input Voltage	24V DC
Power Consumption	17W/m
Physical	
LED Count	60 LEDs/m
Cutting Unit	6 LEDs
Cutting Unit Length	100mm
Minimum Bend Diameter	50mm
Output	
LED Light	Epistar SMD LED 5050
Color	RGBW(2700K/3000K/4000K/5000K)
Max Run Length*	
Single Feed	8M
Double Feed	16M
Beam Angle	120°
Lumen Maintenance	70,000 Hours L70 @ 25°C 50,000 Hours L70 @ 50°C
Temperature Ranges	
Installation	0°C to 50°C
Operating	-25°C to 50°C
Dependability	
Warranty	3 Years Warranty
IP Rating	IP68

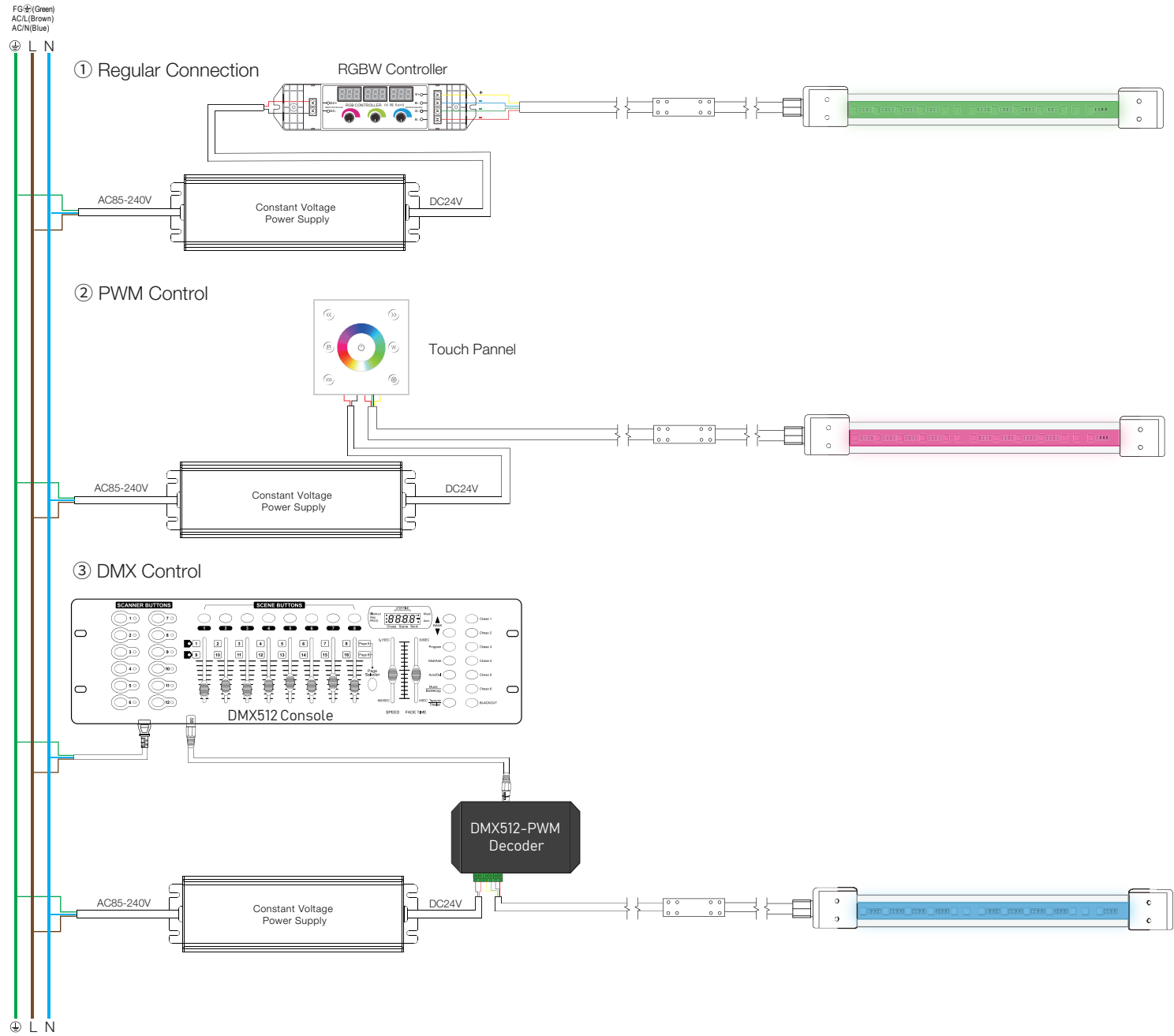
Emitting Color	Lumen Output
 Red	82lm/m
 Green	287lm/m
 Blue	571lm/m
 RGBW	758lm/m
 3000K	380lm/m

Illuminance Distribution



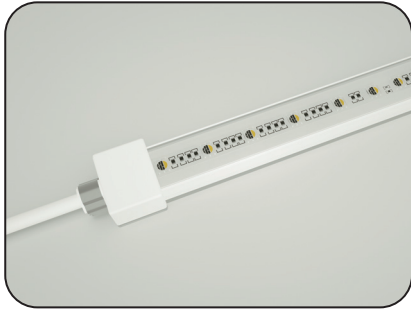
P01 Multi Color RGBW LED Strip Light

Connection

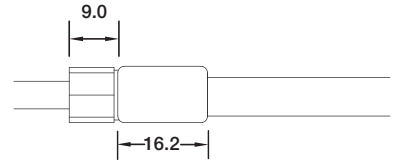
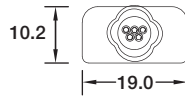


P01 Configuration and Accessories

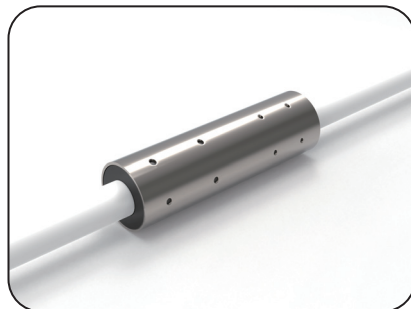
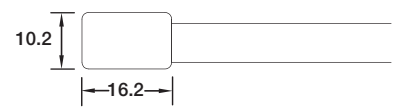
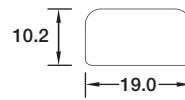
Mold Injection Connector (IP67 Factory Assembly Only)



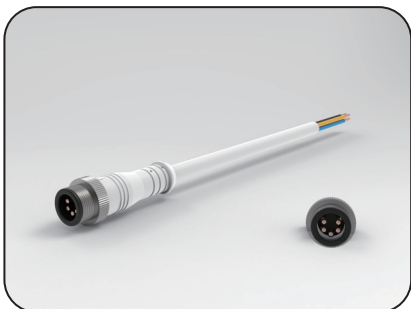
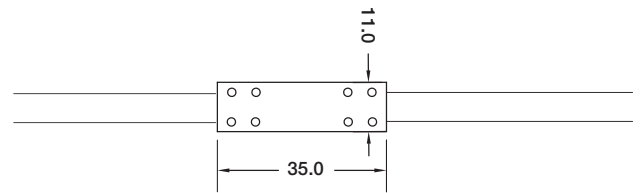
Direct Entry Connector
 MJ-P01-RGBW-D01/02/03
 MJ-P01-RGBW-D01SM
 MJ-P01-RGBW-D02SF
 MJ-P01-RGBW-D03SFM



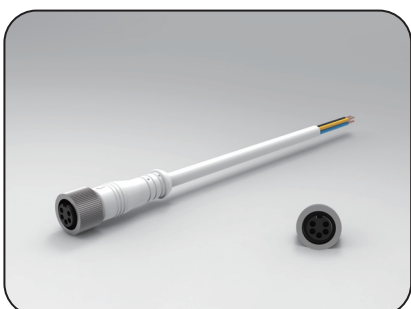
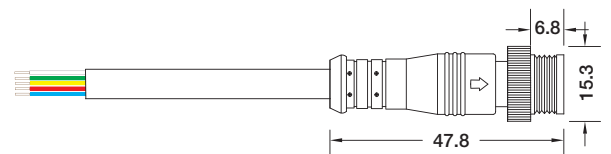
End Cap



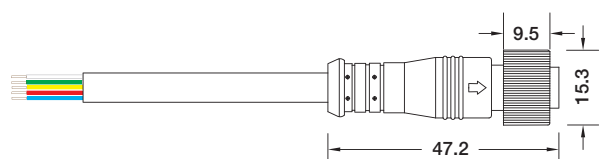
Waterproof Interrupter



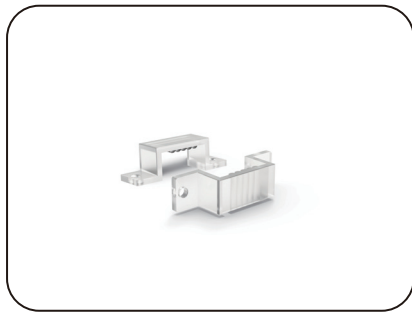
Male Connector
 SYZ-M12-M-5C-05-W



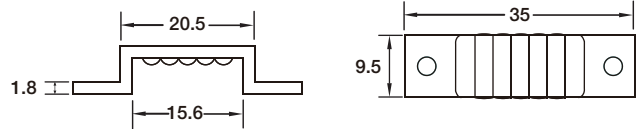
Female Connector
 SYZ-M12-F-5C-05-W



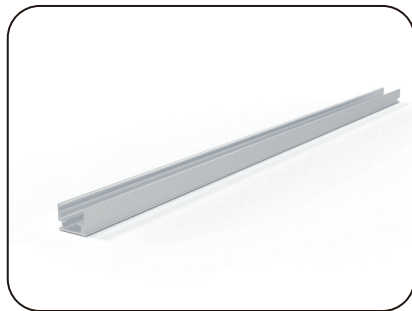
P01 Configuration and Accessories



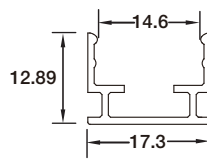
Plastic Mounting Clip
SJJ-ZSJ-006



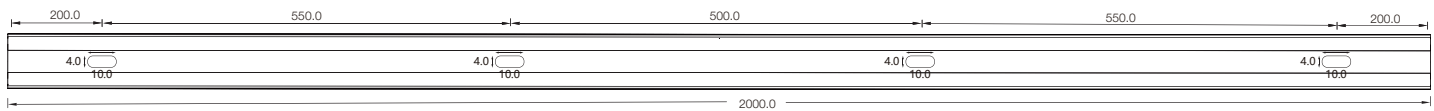
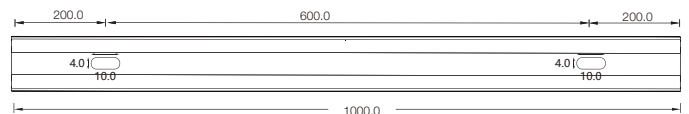
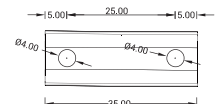
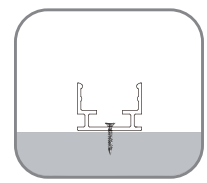
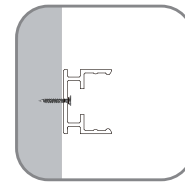
Double Coated Tissue tape
3M-4229
3m/rolls
Width: 15mm



Aluminum Mounting Channel
ALCP01S01



Installation Way Surface Mounted



Model	W x H(mm)	Standard Length	Screw Holes	Holes Numbers	Suitable Product
ALCP01S01-035	17.3*12.89	35mm	Φ4.0mm	2	P01
ALCP01S01-100		1000mm	4.0x10mm	2	P01
ALCP01S01-200		2000mm	4.0x10mm	4	P01