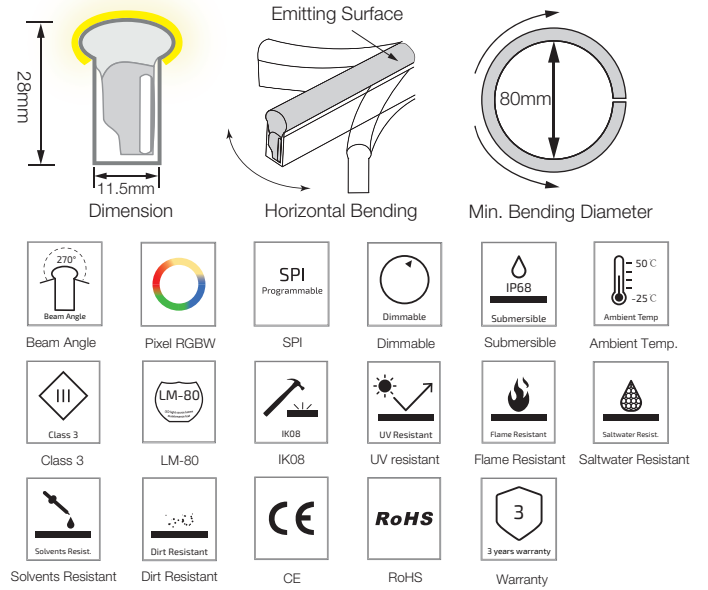
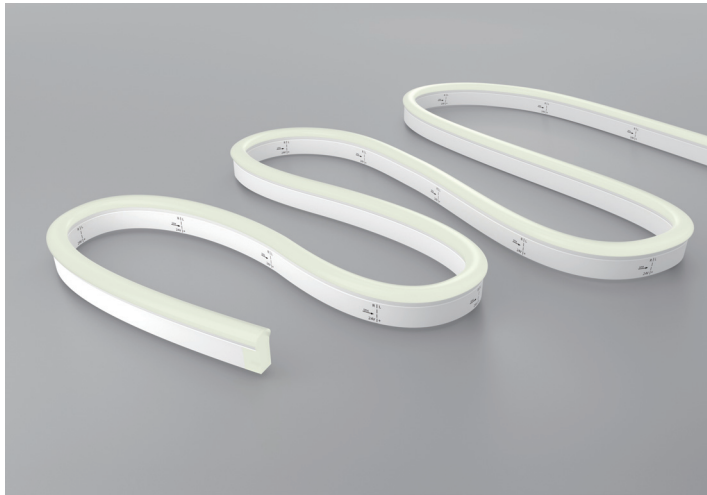


F21 SPI Pixel Chasing RGBW LED Linear Flex

F21-24V-5050-70-SPI4-RGBW

Specification



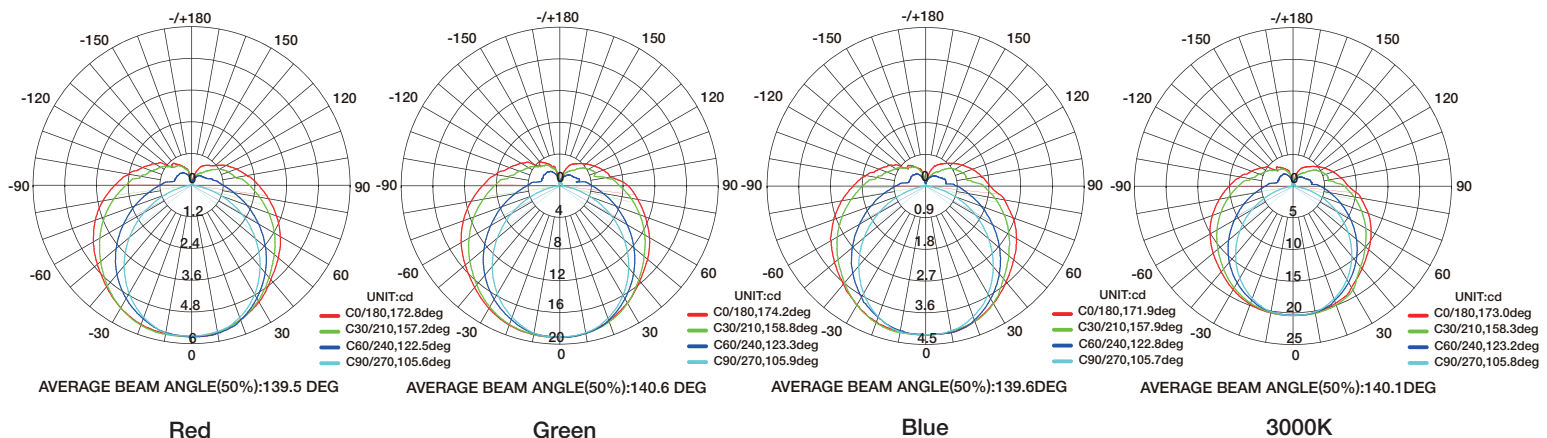
Technical Parameters

Electrical	
Input Voltage	24V DC
Power Consumption	18W/m
Physical	
LED Count	70 LEDs/m
Cutting Unit	7 LEDs
Cutting Unit Length	100mm
Minimum Bend Diameter	80mm
Output	
LED Light	Epistar SMD LED 5050
Color	RGBW(2700K/3000K/4000K/5000K)
Working Mode	SPI
Pixels Quantity	10 Pixels/m
IC Chips	UCS8904
Max Run Length*	
Single Feed	8 M
Double Feed	16 M
Beam Angle	270°
Lumen Maintenance	70,000 Hours L70 @ 25°C 50,000 Hours L70 @ 50°C

Emitting Color	Lumen Output
Red	35lm/m
Green	95lm/m
Blue	20-lm/m
RGBW	250m/m
3000K	90lm/m

Temperature Ranges	
Installation	0°C to 50°C
Operating	-25°C to 50°C
Dependability	
Warranty	3 Years Warranty
IP Rating	IP68 Wet location submersible <2m

Illuminance Distribution



F21 SPI Pixel Chasing RGBW LED Linear Flex

