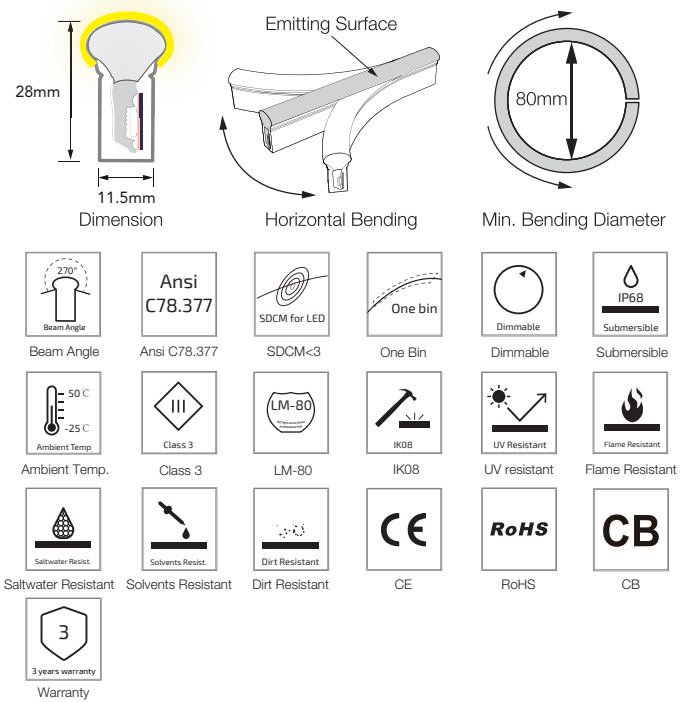
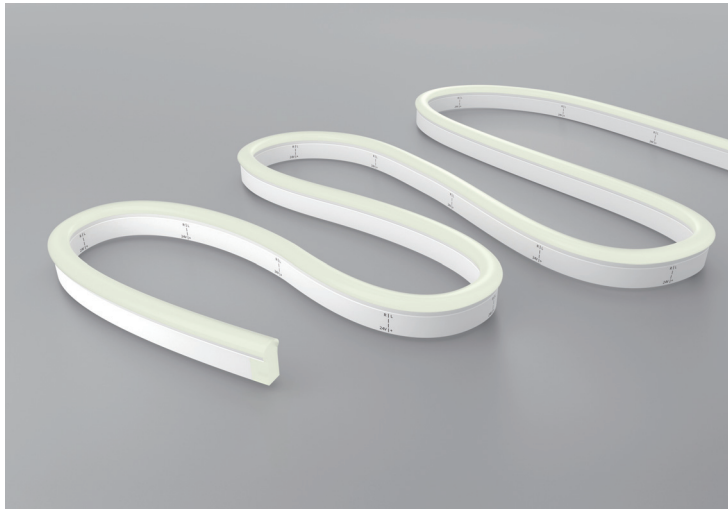


F21 Dim To Warm LED Linear Flex



F21-24V-2835-120-DTW(1800K~3000K)

Specification

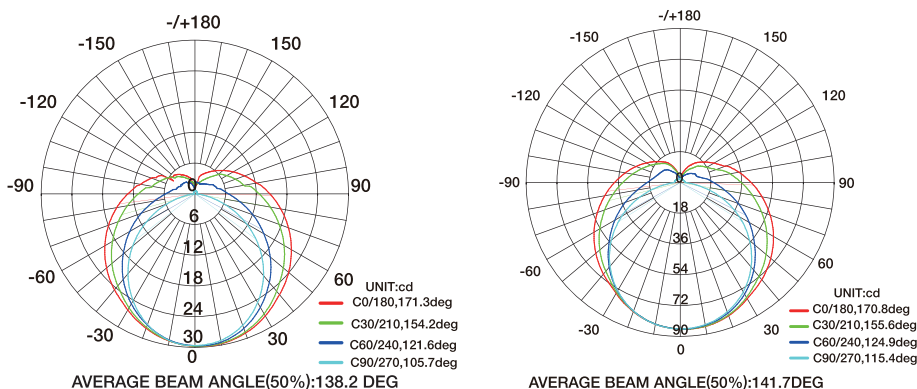


Technical Parameters

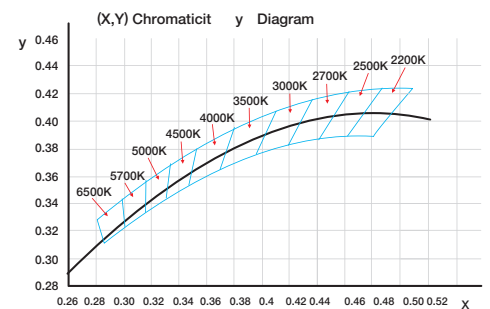
Electrical	
Input Voltage	24V DC
Power Consumption	12W/m
Physical	
LED Count	120 LEDs/m
Cutting Unit	12 LEDs
Cutting Unit Length	100mm
Minimum Bend Diameter	80mm
Output	
LED Light	Epistar SMD LED 2835
CRI	>80, >90
Max Run Length*	
Single Feed	10 M
Double Feed	20 M
Beam Angle	270°
Lumen Maintenance	70,000 Hours L70 @ 25°C 50,000 Hours L70 @ 50°C
Temperature Ranges	
Installation	0°C to 50°C
Operating	-25°C to 50°C
Dependability	
Warranty	3 Years Warranty
IP Rating	IP68 Wet location submersible <2m

Color	Lumen Output
 1800K	210lm/m
 3000K	280lm/m

Illuminance Distribution



White Color Charts



F21 Dim To Warm LED Linear Flex

Connection

